



Learn the basics needed to create your first integration.

GHOST NODES

Quick Start

Version 1.0 January 2021

Contents

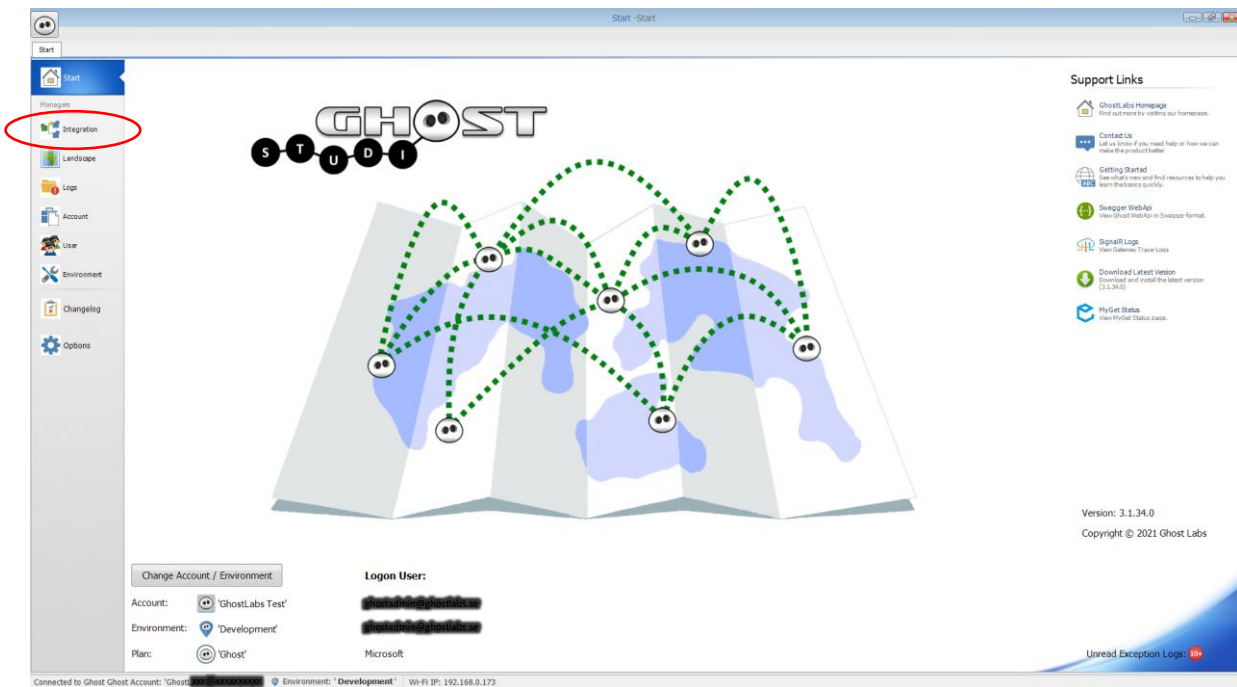
- 1. Pre-Requisites..... 2
- 2. Start the Ghost Studio 2
- 3. Create your first integration..... 3

1. Pre-Requisites

This quick start guide gives you a basic knowledge of how to create your first integration. It expects that you have installed at least one ghost gateway, one ghost agent and the Ghost Studio.

2. Start the Ghost Studio

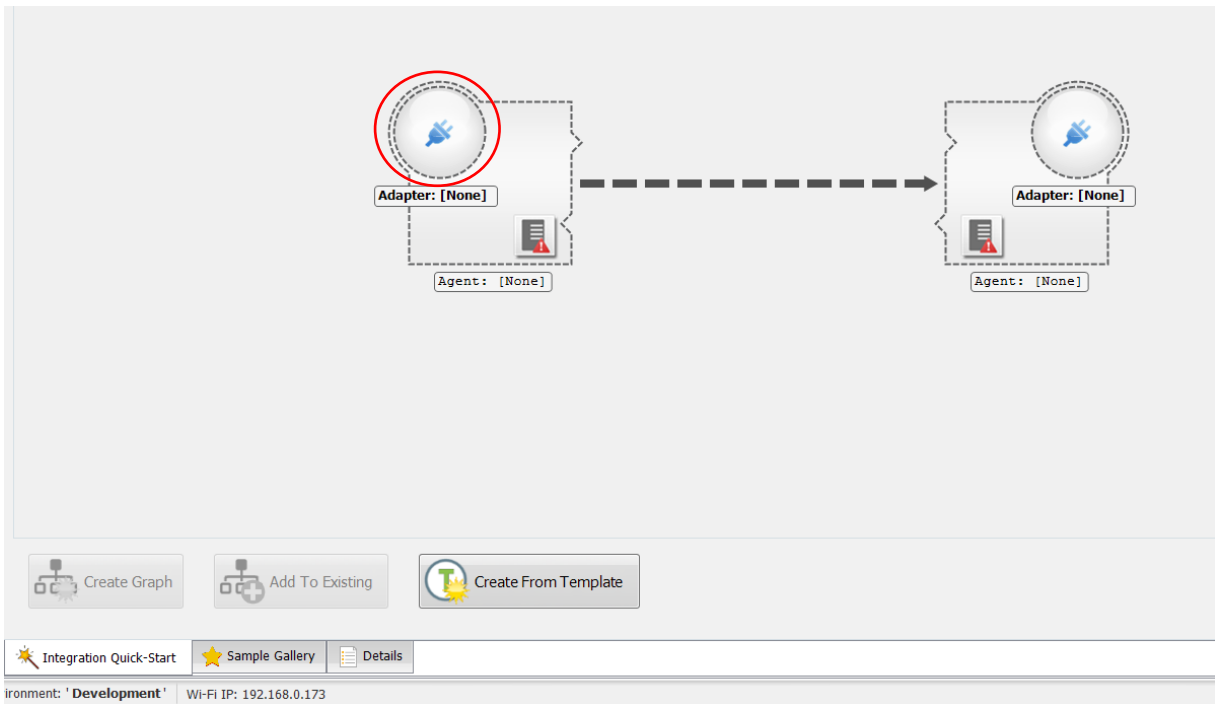
Once you have started the Ghost Studio, you are presented with the main view.



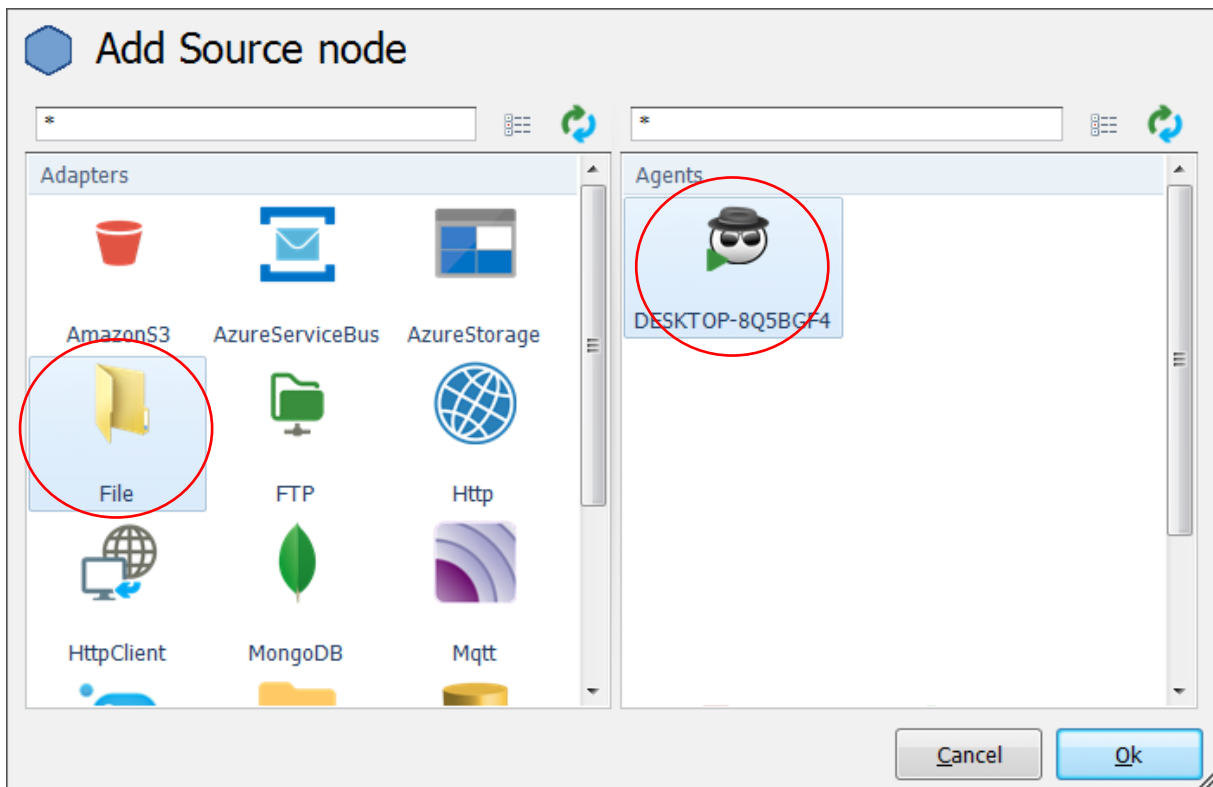
To get started, click on **Integration** in the top left menu.

3. Create your first integration

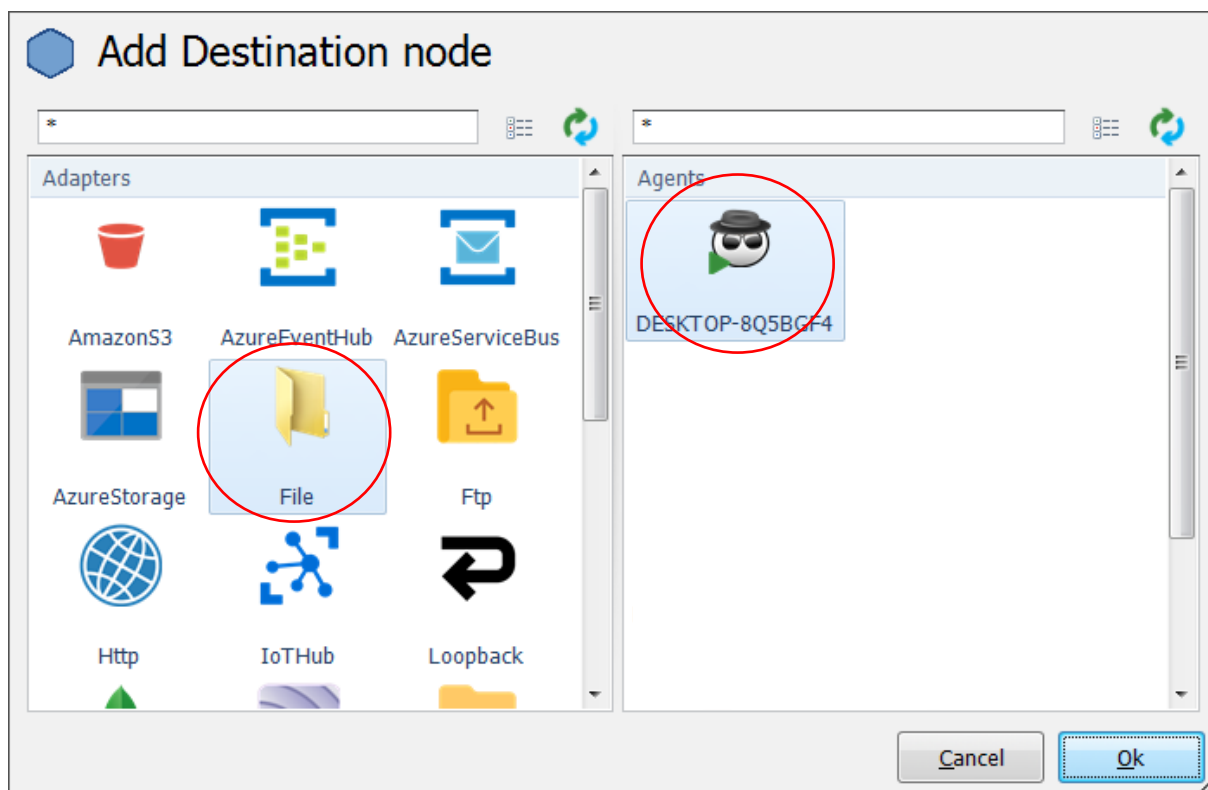
In the **Integration Quick Start** click the left connector icon.



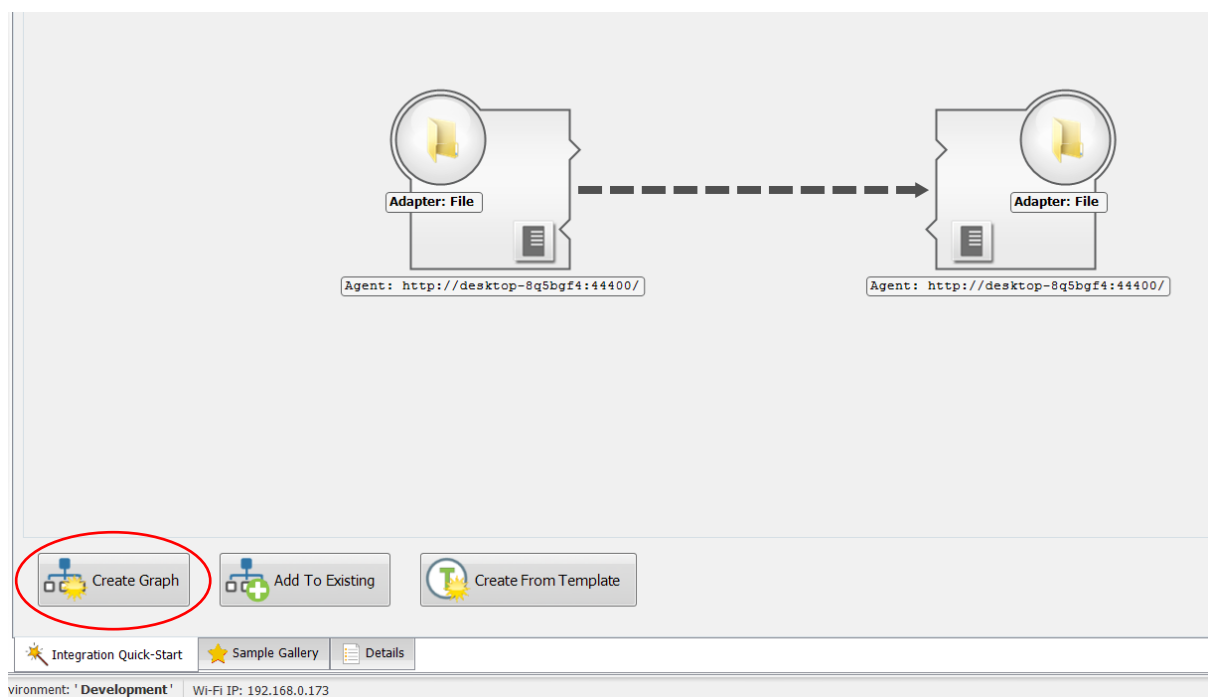
Select the **File** source adapter in the left pane and your local agent in the right pane and press **Ok**.



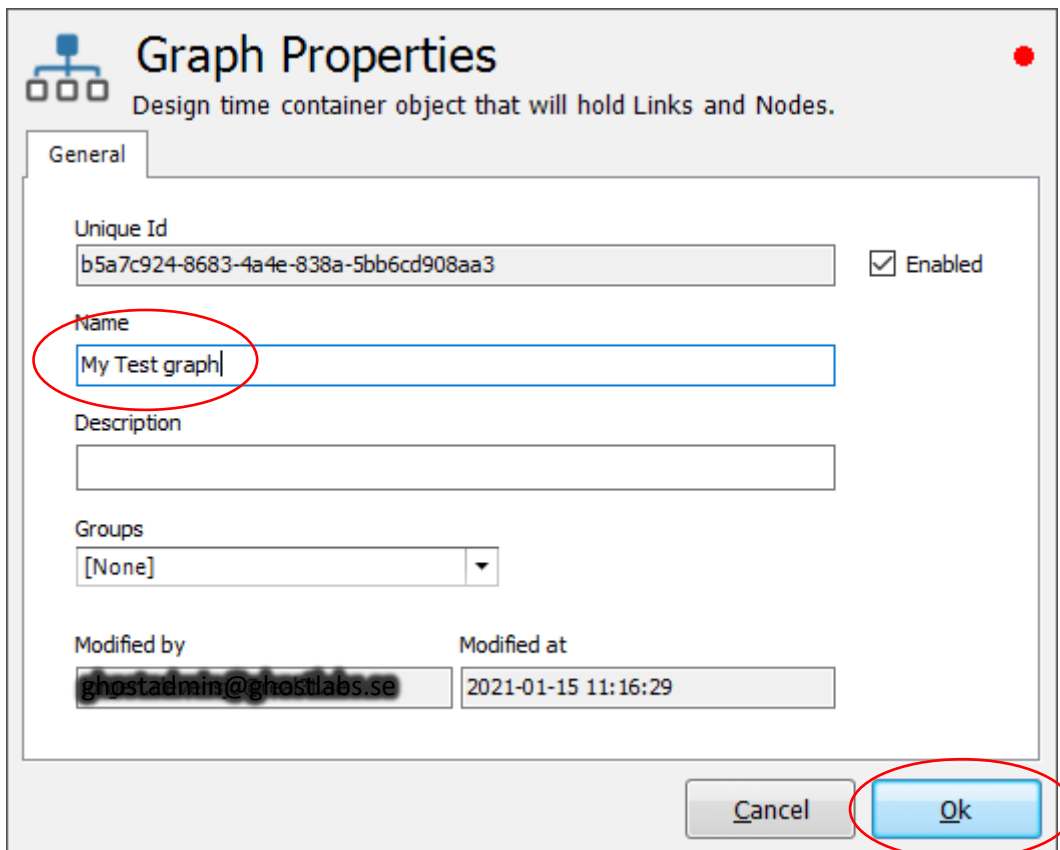
Click on the right connector icon and select the **File** destination adapter in the left pane and your local agent in the right pane and then press **Ok**.



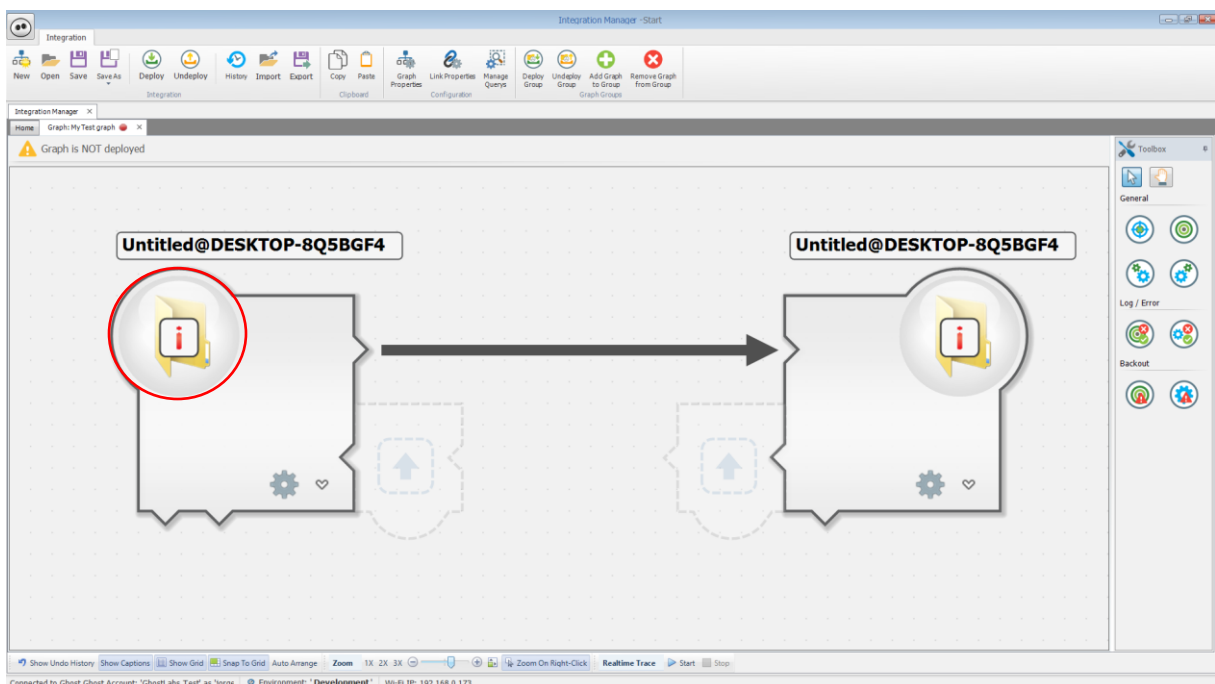
Press the **Create Graph** button...



...and enter a name in the **Graph Properties** dialogue for your first graph, then press **Ok**.

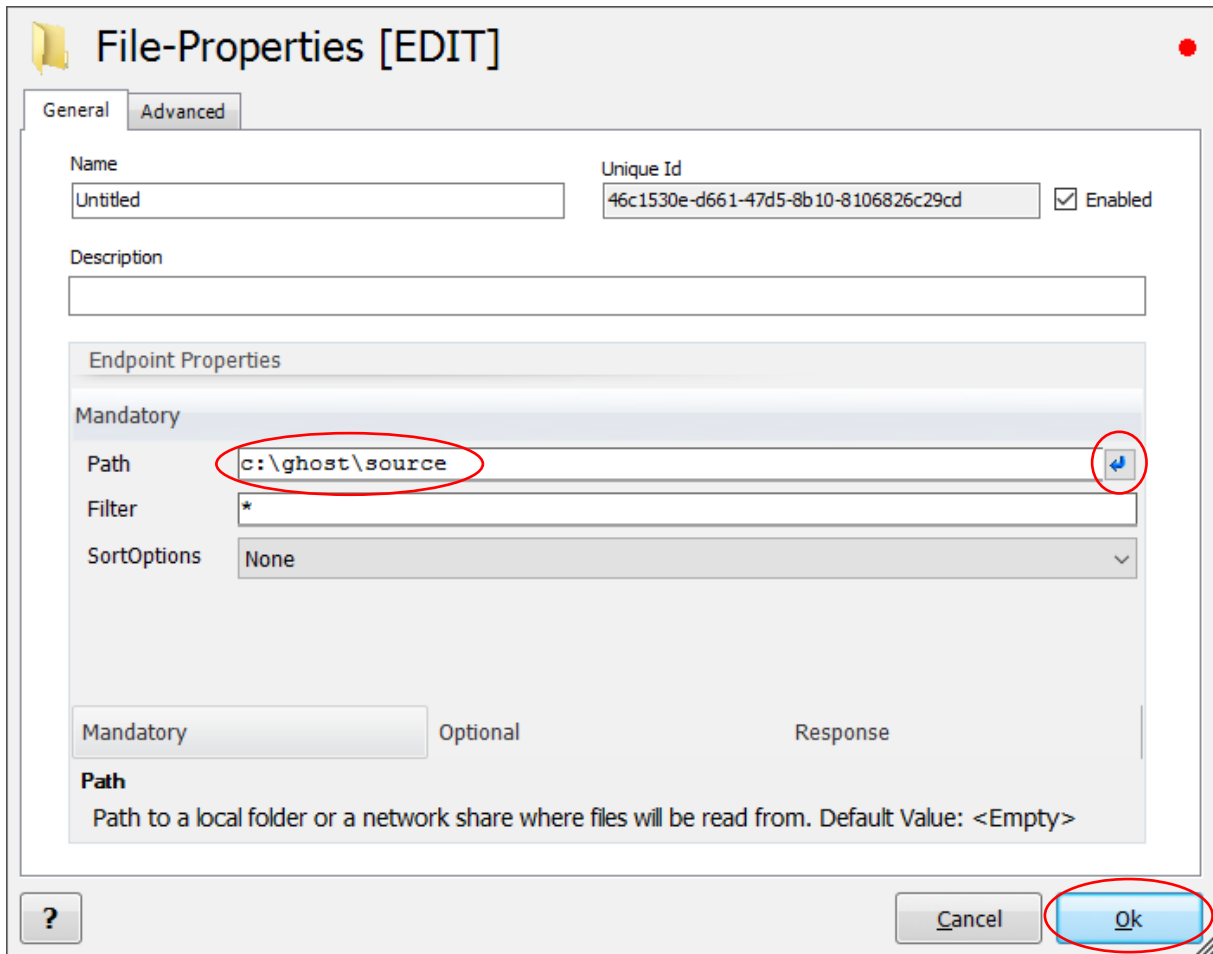


Now you are in the **Integration Manager** and we need to fill in the missing properties to get our graph working.

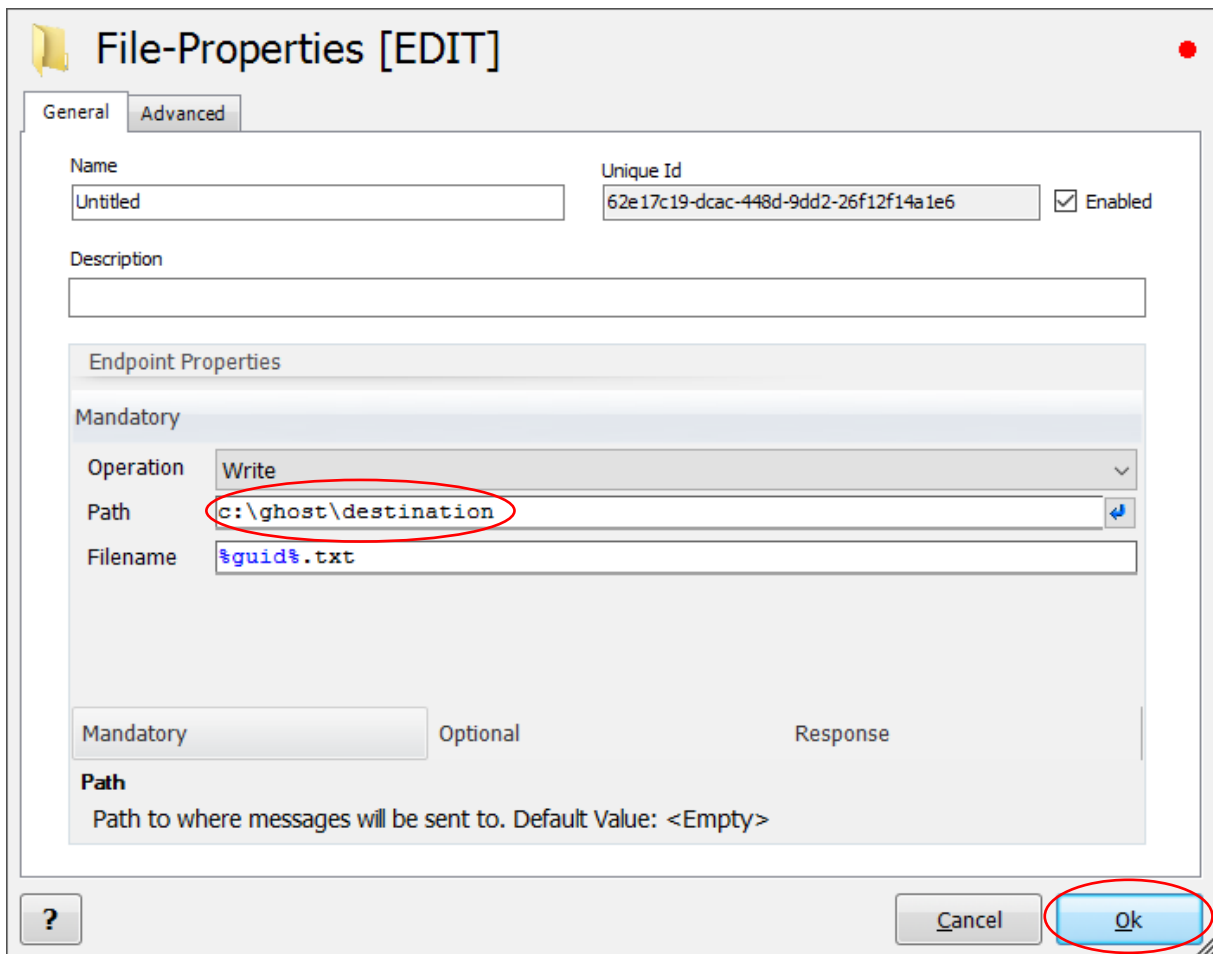


Press the left exclamation mark to open the properties dialogue of the file source adapter.

Now, we need to create a source folder where we can drop files. (I.e. c:\ghost\source or any folder of your choice...) You can do this either with Windows File Explorer or by clicking the small icon on the left-hand side of the path property. Make sure the **Path** property contains your created path and then click on **Ok**.

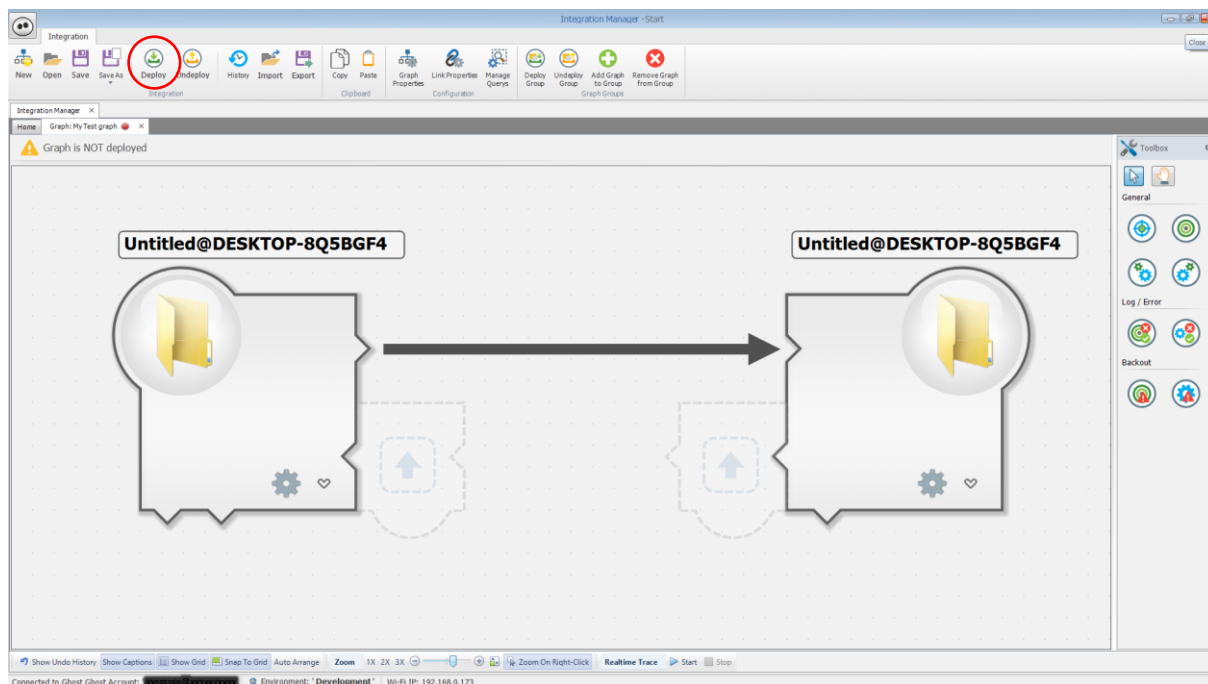


Press the right exclamation mark to open the properties dialogue of the file destination adapter.



In the same way, we need to fill in a destination path (i.e. c:\ghost\destination or any folder of your choice). Make sure your **Path** property is filled and then click on **Ok**.

Click on the **Deploy** icon in the top icon bar to deploy your first graph.



That's it!

To test your graph, drop any file into your source folder, and it will immediately be moved to your destination folder.